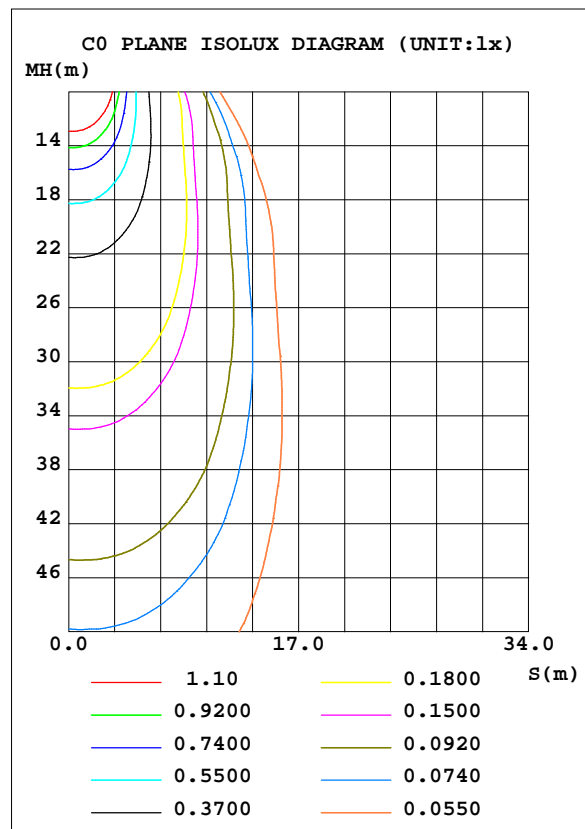
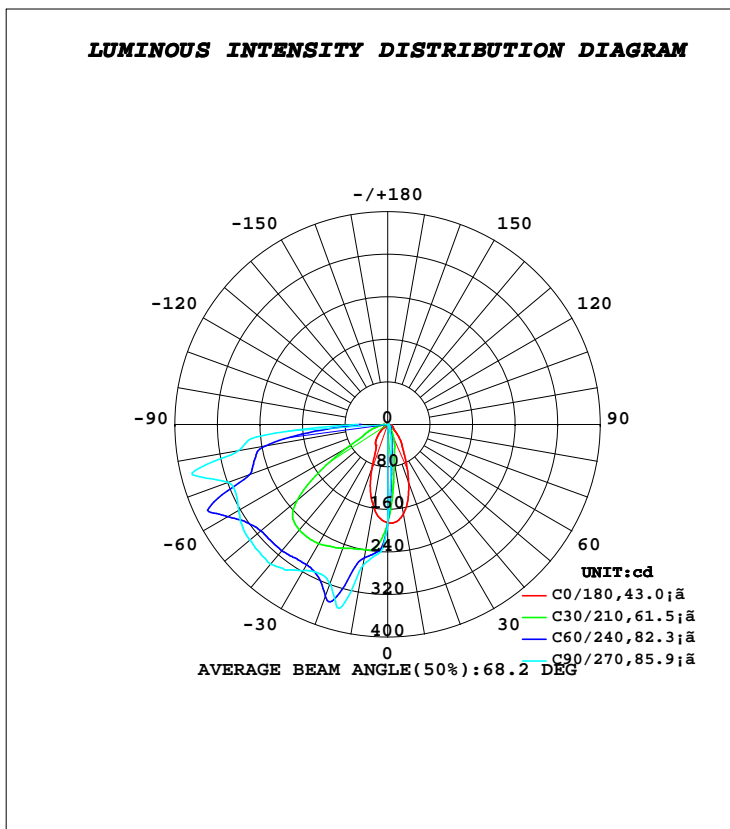


**LUMINAIRE PHOTOMETRIC TEST REPORT**

Test:U:0V I:0A P:0W PF:0 Lamp Flux:633.883x1 lm		
NAME: LS-A2M	TYPE:Luminaire	WEIGHT:
DIM.: CCT=3391K;Ra=91;t=43C	SPEC.:	SERIAL No.:
MFR.: MC Clever	SUR.:	PROTECTION ANGLE:

DATA OF LAMP		PHOTOMETRIC DATA			
MODEL		I <sub>max</sub> (cd)	388.7	S/MH(C0/180)	0.75
NOMINAL POWER(W)	0	LOR(%)	100.0	S/MH(C90/270)	0.14
RATED VOLTAGE(V)	1	TOTAL FLUX(lm)	633.88	η UP, DN(C0-180)	0.0,4.1
NOMINAL FLUX(lm)	633.883	CIE CLASS	DIRECT	η UP, DN(C180-360)	0.0,95.9
LAMPS INSIDE	1	η up(%)	0.0	CIBSE SHR NOM	0.00
TEST VOLTAGE(V)	1.3	η down(%)	100.0	CIBSE SHR MAX	1.00



**C Range: 0 - 360DEG**  
**C Interval: 10.0DEG**  
**Test Speed: MEDIUM**  
**Temperature:25DEG**  
**Operators:Skobnikov**  
**Test Date:2020-02-13**

**γ Range: 0 - 90DEG**  
**γ Interval: 0.5DEG**  
**Test System:EVERFINE GO-2000B\_V1 SYSTEM V2.0.265**  
**Humidity:40%**  
**Test Distance:10.815m [K=1.0000]**  
**Remarks: 4946\_2**

ZONAL FLUX DIAGRAM

ZONAL FLUX DIAGRAM:

$\gamma$	C0	C45	C90	C135	C180	C225	C270	C315	$\gamma$	$\Phi$ zone	$\Phi$ total	%lum,lamp
5	183.9	100.4	72.70	97.49	176.6	238.5	245.9	240.7	0- 5	4.243	4.243	0.67,0.67
10	170.9	55.79	43.83	49.60	155.8	246.5	269.5	254.8	5- 10	11.47	15.72	2.48,2.48
15	147.7	40.01	25.78	34.89	127.2	258.5	358.0	270.0	10- 15	18.73	34.45	5.43,5.43
20	115.7	25.48	12.82	20.59	86.97	298.0	318.6	299.0	15- 20	26.05	60.50	9.54,9.54
25	85.27	14.84	8.379	11.75	53.57	321.4	308.7	325.4	20- 25	31.32	91.81	14.5,14.5
30	61.03	9.930	6.893	8.668	45.19	327.0	317.4	328.8	25- 30	36.13	127.9	20.2,20.2
35	47.32	7.770	6.354	7.574	40.04	332.0	334.2	322.8	30- 35	40.63	168.6	26.6,26.6
40	36.35	6.984	2.682	7.170	30.71	327.8	342.9	314.6	35- 40	44.47	213.0	33.6,33.6
45	25.40	5.256	1.731	4.918	20.78	326.0	340.9	303.6	40- 45	47.18	260.2	41.1,41.1
50	15.71	2.635	1.626	2.191	13.23	324.0	338.2	304.6	45- 50	49.15	309.4	48.8,48.8
55	10.77	1.674	1.527	1.553	9.607	306.5	333.4	304.7	50- 55	50.37	359.7	56.8,56.8
60	8.601	1.513	1.032	1.412	7.406	266.1	323.6	270.0	55- 60	49.91	409.7	64.6,64.6
65	7.607	1.446	0.4390	1.332	6.277	230.0	314.0	249.0	60- 65	48.89	458.5	72.3,72.3
70	7.115	1.319	0.4575	1.173	5.636	179.1	319.2	203.5	65- 70	47.37	505.9	79.8,79.8
75	6.917	1.168	0.5257	1.014	4.885	120.7	373.5	152.7	70- 75	44.89	550.8	86.9,86.9
80	4.279	1.057	0.5998	0.9097	1.780	60.52	285.5	89.03	75- 80	38.05	588.9	92.9,92.9
85	0.8225	0.9770	0.7048	0.8820	0.4405	32.33	231.2	46.48	80- 85	29.64	618.5	97.6,97.6
90	0.2173	0.8690	0.8223	0.8453	0.1925	20.43	55.57	27.47	85- 90	15.39	633.9	100,100
95									90- 95			
100									95-100			
105									100-105			
110									105-110			
115									110-115			
120									115-120			
125									120-125			
130									125-130			
135									130-135			
140									135-140			
145									140-145			
150									145-150			
155									150-155			
160									155-160			
165									160-165			
170									165-170			
175									170-175			
180									175-180			
DEG	LUMINOUS INTENSITY:cd								UNIT:lm			

C Range: 0 - 360DEG  
 C Interval: 10.0DEG  
 Test Speed: MEDIUM  
 Temperature:25DEG  
 Operators:Skobnikov  
 Test Date:2020-02-13

$\gamma$  Range: 0 - 90DEG  
 $\gamma$  Interval: 0.5DEG  
 Test System:EVERFINE GO-2000B\_V1 SYSTEM V2.0.265  
 Humidity:40%  
 Test Distance:10.815m [K=1.0000]  
 Remarks: 4946\_2

**LUMINOUS DISTRIBUTION INTENSITY DATA**

Test:U:0V I:0A P:0W PF:0 Lamp Flux:633.883x1 lm		
NAME: LS-A2M	TYPE:Luminaire	WEIGHT:
DIM.: CCT=3391K;Ra=91;t=43C	SPEC.:	SERIAL No.:
MFR.: MC Clever	SUR.:	PROTECTION ANGLE:

Table--1

UNIT: cd

C (DEG) \ γ (DEG)	0	10	20	30	40	50	60	70	80	90	100	110	120	130	140	150	160	170	180
0	185	185	186	185	186	185	186	185	186	186	186	186	186	186	186	186	186	186	185
5	184	162	142	123	107	93.4	85.3	77.9	75.6	72.7	74.1	75.5	82.2	90.2	105	120	139	157	177
10	171	127	93.2	70.8	58.8	52.7	48.7	46.4	44.5	43.8	43.6	44.5	45.7	48.3	50.9	56.0	79.5	117	156
15	148	92.2	62.7	50.4	43.1	36.9	32.4	29.2	26.8	25.8	25.9	27.3	29.4	32.6	37.1	41.8	47.1	68.1	127
20	116	65.9	48.3	37.6	29.1	21.9	17.2	14.7	13.3	12.8	12.8	13.5	14.9	18.1	23.1	29.0	36.3	44.2	87.0
25	85.3	51.2	36.8	25.2	16.9	12.8	10.4	9.24	8.55	8.38	8.39	8.86	9.47	10.8	12.7	18.1	26.3	37.0	53.6
30	61.0	40.9	25.5	15.5	11.0	8.87	7.71	7.28	6.91	6.89	6.94	7.32	7.63	8.23	9.10	11.2	17.7	30.0	45.2
35	47.3	29.7	16.2	10.6	8.20	7.34	6.80	6.66	6.34	6.35	6.47	6.90	7.20	7.53	7.62	8.64	11.8	22.8	40.0
40	36.4	19.1	11.1	8.11	7.12	6.84	6.08	3.69	2.99	2.68	2.77	3.39	5.76	7.24	7.10	7.38	9.10	14.8	30.7
45	25.4	12.4	8.39	7.16	6.73	3.76	2.33	1.88	1.78	1.73	1.75	1.81	2.00	3.26	6.56	6.83	7.47	10.4	20.8
50	15.7	9.14	7.33	6.94	3.40	1.86	1.70	1.69	1.64	1.63	1.65	1.65	1.63	1.73	2.65	6.38	6.62	7.89	13.2
55	10.8	7.78	7.03	3.57	1.73	1.62	1.61	1.59	1.56	1.53	1.54	1.55	1.55	1.53	1.57	2.71	5.96	6.53	9.61
60	8.60	7.39	6.53	1.64	1.50	1.52	1.54	1.49	1.23	1.03	1.14	1.41	1.46	1.42	1.40	1.41	3.41	5.72	7.41
65	7.61	7.29	1.91	1.32	1.41	1.48	1.35	0.90	0.59	0.44	0.48	0.68	1.15	1.36	1.31	1.21	1.38	5.05	6.28
70	7.12	5.34	1.18	1.23	1.34	1.30	0.98	0.70	0.52	0.46	0.43	0.52	0.78	1.11	1.24	1.10	0.97	2.35	5.64
75	6.92	1.20	0.93	1.11	1.24	1.09	0.89	0.65	0.52	0.53	0.47	0.45	0.71	0.90	1.13	1.00	0.85	0.78	4.88
80	4.28	0.63	0.80	0.99	1.11	1.00	0.87	0.68	0.61	0.60	0.54	0.52	0.73	0.86	0.96	0.90	0.70	0.52	1.78
85	0.82	0.44	0.68	0.91	0.98	0.97	0.89	0.76	0.68	0.70	0.63	0.61	0.80	0.88	0.89	0.81	0.59	0.32	0.44
90	0.22	0.29	0.44	0.63	0.80	0.94	0.9954	0.83	0.81	0.82	0.78	0.72	0.91	0.89	0.80	0.62	0.37	0.16	0.19

**C Range: 0 - 360DEG**  
**C Interval: 10.0DEG**  
**Test Speed: MEDIUM**  
**Temperature: 25DEG**  
**Operators: Skobnikov**  
**Test Date: 2020-02-13**

**γ Range: 0 - 90DEG**  
**γ Interval: 0.5DEG**  
**Test System: EVERFINE GO-2000B\_V1 SYSTEM V2.0.265**  
**Humidity: 40%**  
**Test Distance: 10.815m [K=1.0000]**  
**Remarks: 4946\_2**

**LUMINOUS DISTRIBUTION INTENSITY DATA**

Test:U:0V I:0A P:0W PF:0 Lamp Flux:633.883x1 lm		
NAME: LS-A2M	TYPE:Luminaire	WEIGHT:
DIM.: CCT=3391K;Ra=91;t=43C	SPEC.:	SERIAL No.:
MFR.: MC Clever	SUR.:	PROTECTION ANGLE:

Table--2

UNIT: cd

$\gamma$ (DEG) \ C (DEG)	190	200	210	220	230	240	250	260	270	280	290	300	310	320	330	340	350		
0	185	186	185	186	185	186	185	186	186	186	186	186	186	186	186	186	186		
5	196	214	229	236	241	241	245	244	246	243	246	242	243	238	234	222	205		
10	195	227	239	242	251	255	262	265	270	266	268	261	259	251	247	238	213		
15	188	232	242	249	268	314	345	353	358	355	350	312	278	263	254	243	212		
20	173	234	248	261	336	343	326	315	319	318	341	358	326	272	260	246	201		
25	144	233	253	282	361	313	305	305	309	304	312	338	360	292	262	244	176		
30	107	225	259	298	356	305	304	309	317	311	310	305	347	311	260	240	141		
35	73.9	200	260	299	366	306	310	321	334	322	314	298	325	321	255	224	98.6		
40	53.6	157	259	287	369	310	318	331	343	332	318	298	318	311	248	186	59.8		
45	43.0	106	252	276	377	310	319	333	341	336	321	301	326	282	242	136	42.5		
50	32.1	65.9	223	267	381	312	316	330	338	333	320	306	346	264	236	80.5	32.7		
55	22.0	46.8	161	258	355	323	309	323	333	323	316	316	354	256	195	48.3	24.8		
60	13.8	36.2	90.6	248	284	347	310	317	324	310	314	346	294	247	133	40.9	16.7		
65	9.69	24.8	51.6	195	266	370	335	315	314	302	320	347	270	228	71.8	31.7	11.3		
70	7.30	14.8	38.6	108	251	277	386	363	319	309	352	283	256	152	50.2	20.8	8.61		
75	6.22	9.80	25.7	47.4	195	259	296	359	374	355	308	260	227	78.9	35.9	12.5	7.20		
80	5.77	7.35	14.8	33.9	87.4	234	272	278	286	267	259	239	130	48.2	22.0	8.82	6.55		
85	5.20	6.40	9.67	22.2	42.6	126	239	238	231	215	219	152	61.6	31.5	12.2	6.97	6.23		
90	1.35	6.12	7.39	12.1	28.9	49.9	63.2	62.5	55.6	50.6	50.6	50.6	38.0	17.1	8.08	6.06	3.22		

**C Range: 0 - 360DEG**  
**C Interval: 10.0DEG**  
**Test Speed: MEDIUM**  
**Temperature: 25DEG**  
**Operators: Skobnikov**  
**Test Date: 2020-02-13**

**$\gamma$  Range: 0 - 90DEG**  
 **$\gamma$  Interval: 0.5DEG**  
**Test System: EVERFINE GO-2000B\_V1 SYSTEM V2.0.265**  
**Humidity: 40%**  
**Test Distance: 10.815m [K=1.0000]**  
**Remarks: 4946\_2**