

Поток: 300 lm
Интенс.: 749 cd

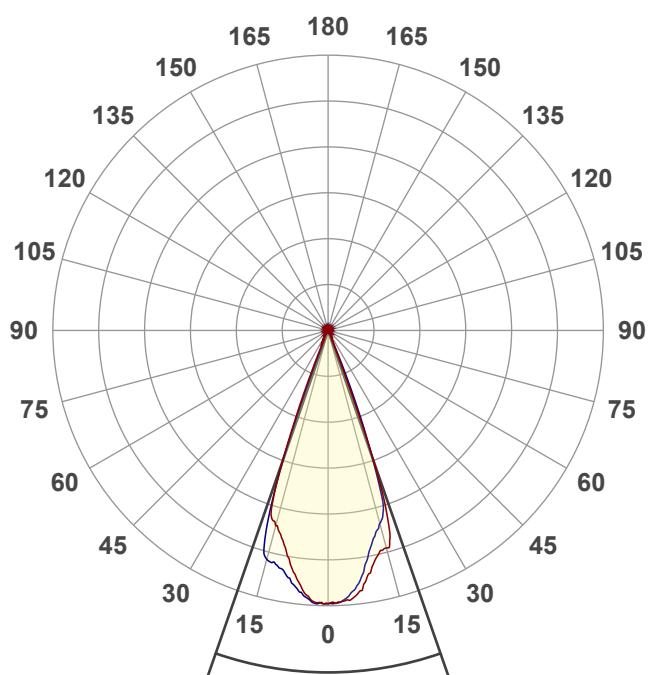
Качество света:

CRI: 70,7

Цветовая температура:

3317 K

4 PLANES



Угол пучка

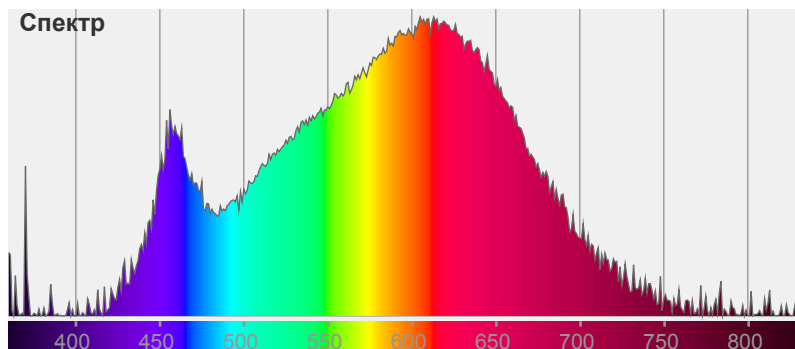
38,4°

Цвет



CIE1931
x: 0,410
y: 0,387

Спектр



Название продукта:

Сила света - LSHT61

Дата и время:

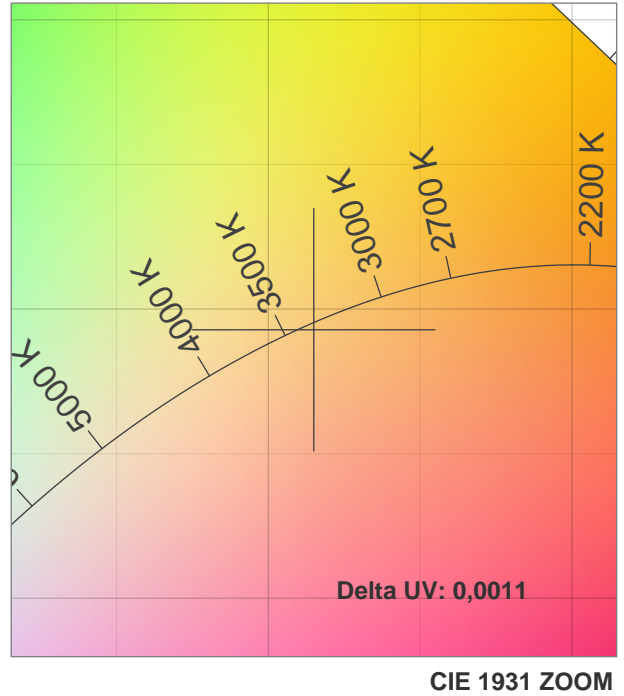
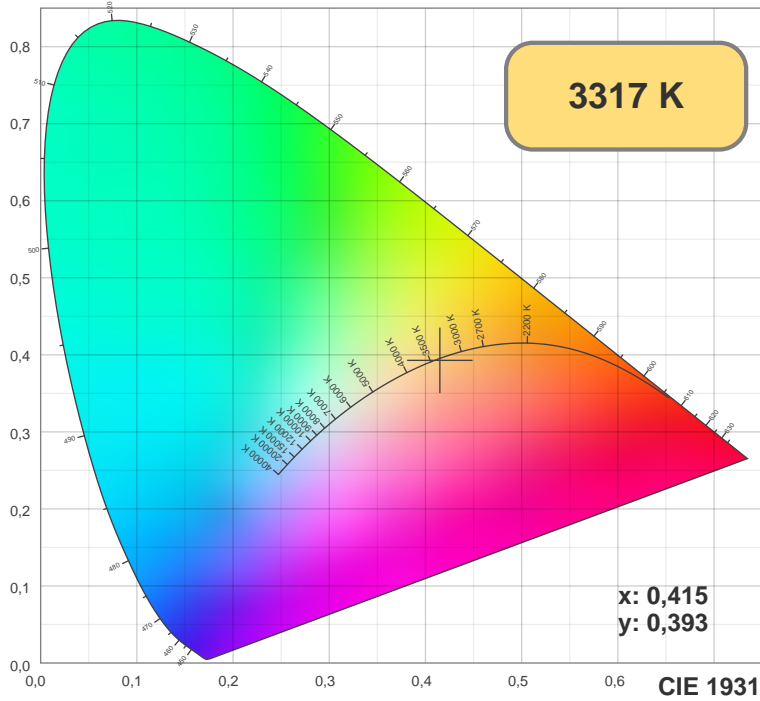
15.01.2019 16:11:32

Дополнительная информация:

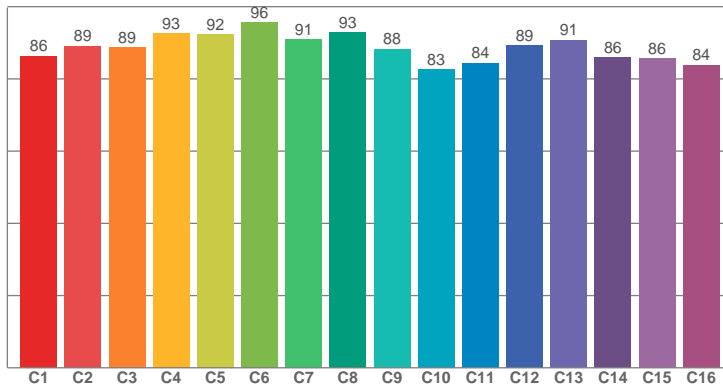
Режим - Мощность 100%

Расфокусированный луч

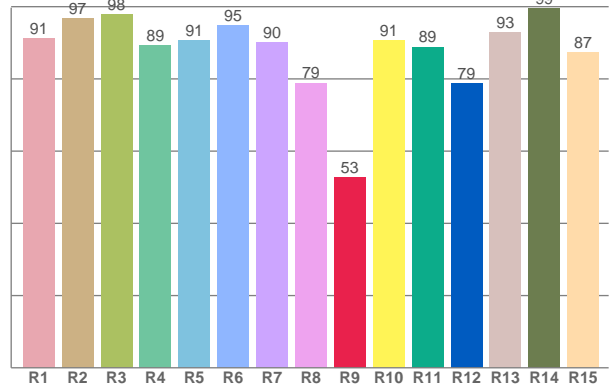
Шаг 0,5 градуса



TM30: 88,6



CRI: 91,2 (R1-R8)



CRI R values, only R1-R8 are used to calculate final CRI value

R1	R2	R3	R4	R5	R6	R7	R8	R9	R10	R11	R12	R13	R14	R15
91,18	96,69	97,89	89,19	90,63	94,76	90,05	78,87	52,67	90,75	88,83	78,74	92,90	99,43	87,29

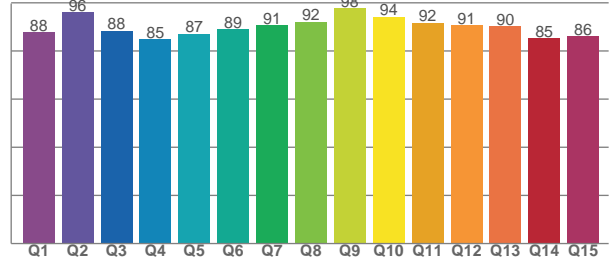
TM30 C values, 16 binned values out of total of 99 C values

C1	C2	C3	C4	C5	C6	C7	C8	C9	C10	C11	C12	C13	C14	C15	C16
86,39	89,17	88,70	92,57	92,23	95,59	90,88	92,79	88,34	82,72	84,43	89,26	90,82	85,86	85,58	83,86

CQS Q values

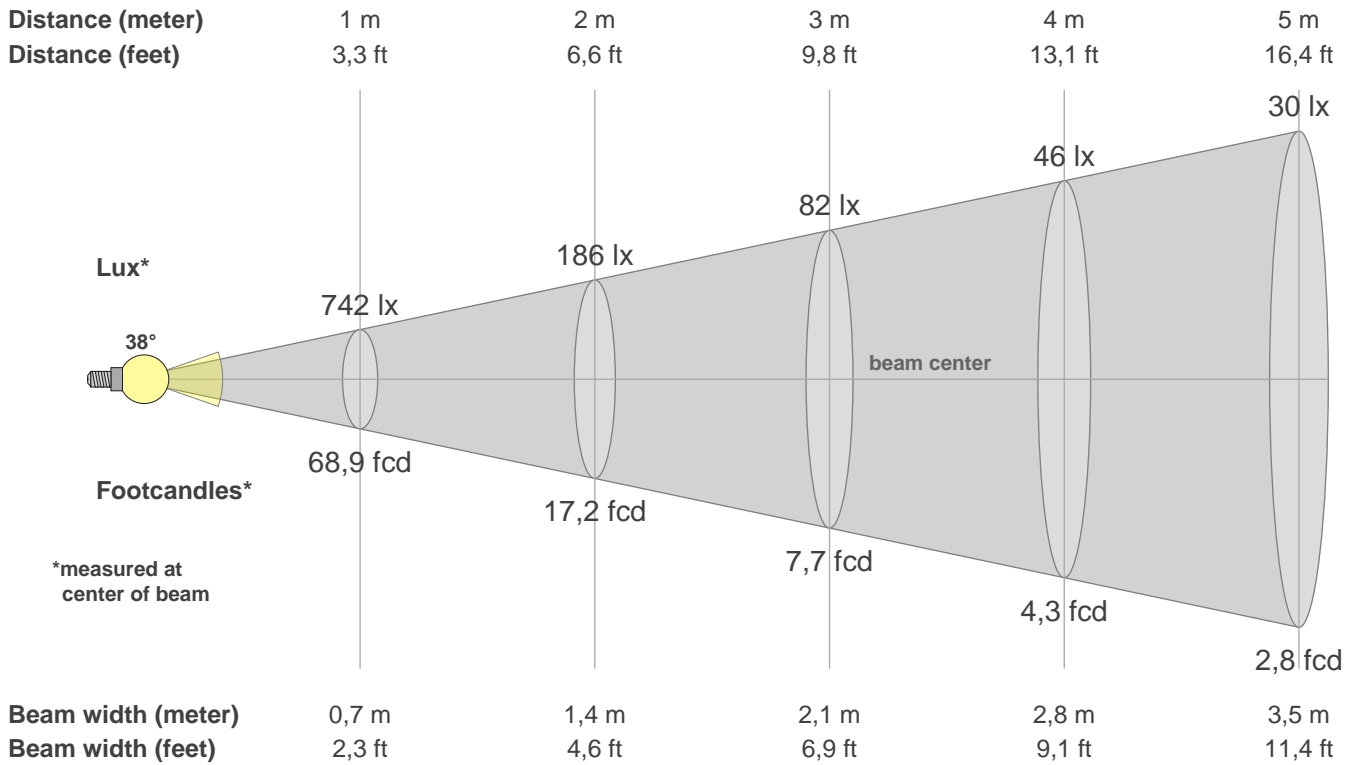
Q1	Q2	Q3	Q4	Q5	Q6	Q7	Q8	Q9	Q10	Q11	Q12	Q13	Q14	Q15
87,65	89,20	88,42	84,74	87,18	88,93	90,77	92,17	97,81	94,23	91,74	90,62	90,32	85,17	86,13

CQS: 89,4



Color parameters

CCT	CRI	CRI R9	TM30 Rf	TM30 Rg	CQS	x	y	u	v	Duv
3317 K	91,2	52,7	88,6	96,9	89,4	0,4	0,4	0,2	0,3	-0,0011



Intensities in 0° c-plane

0°	2°	4°	6°	8°	10°	12°	14°	16°	18°	20°	22°	24°	26°	28°	30°	32°	34°	36°	38°
742	739	734	724	696	667	631	615	606	506	253	36	22	17	16	16	7	7	6	7
100%	100%	99%	98%	94%	90%	85%	83%	82%	68%	34%	5%	3%	2%	2%	2%	1%	1%	1%	1%

Intensities in 90° c-plane

0°	2°	4°	6°	8°	10°	12°	14°	16°	18°	20°	22°	24°	26°	28°	30°	32°	34°	36°	38°
742	741	728	706	670	624	584	557	532	466	296	114	24	17	17	15	13	8	8	8
100%	100%	98%	95%	90%	84%	79%	75%	72%	63%	40%	15%	3%	2%	2%	2%	2%	1%	1%	1%

Intensities in 180° c-plane

0°	2°	4°	6°	8°	10°	12°	14°	16°	18°	20°	22°	24°	26°	28°	30°	32°	34°	36°	38°
742	740	728	700	665	625	586	558	538	484	289	108	30	28	27	23	15	13	11	11
100%	100%	98%	94%	90%	84%	79%	75%	73%	65%	39%	15%	4%	4%	4%	3%	2%	2%	1%	1%

Intensities in 270° c-plane

0°	2°	4°	6°	8°	10°	12°	14°	16°	18°	20°	22°	24°	26°	28°	30°	32°	34°	36°	38°
742	742	733	715	695	671	655	648	631	500	251	49	34	29	25	17	13	11	8	9
100%	100%	99%	96%	94%	90%	88%	87%	85%	67%	34%	7%	5%	4%	3%	2%	2%	1%	1%	1%

Beam angle 50%	Field angle 10%	Cutoff angle 2,5%	Intensity ratio in 120° cone	Intensity ratio in 90° cone
38,4°	43,8°	58,2°	85,9%	83,1%