

Поток: 382 lm
Интенс.: 1349 cd

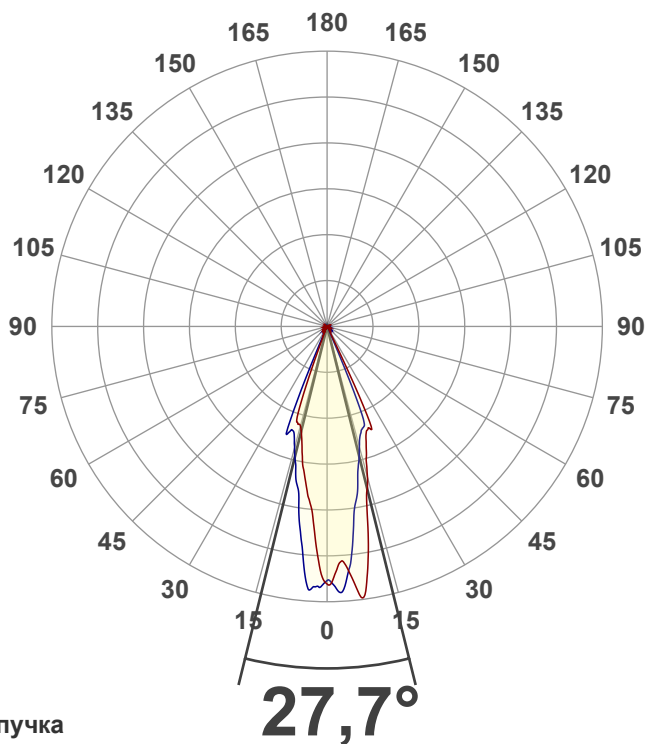
Качество света:



Цветовая температура:



4 PLANES



Угол пучка

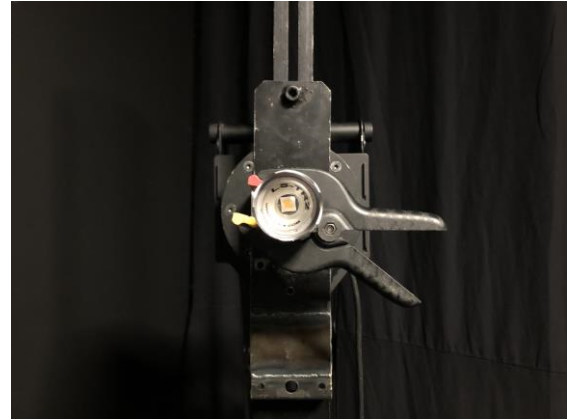
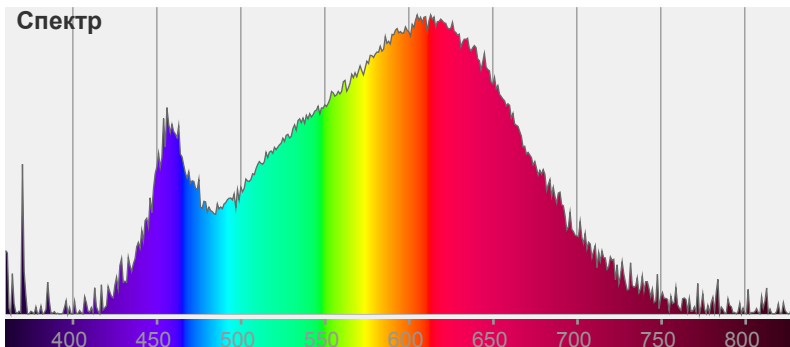
27,7°

Цвет



CIE1931
x: 0,415
y: 0,393

Спектр



Название продукта:

Сила света - LSTR2_2

Дата и время:

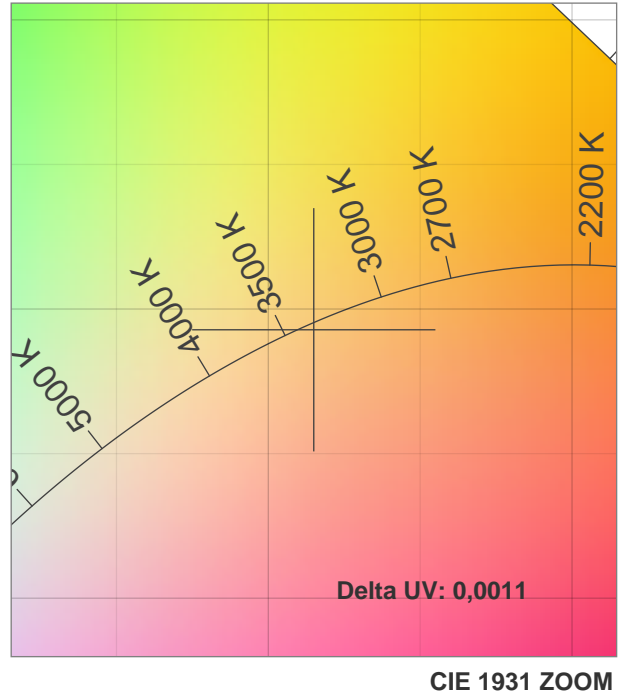
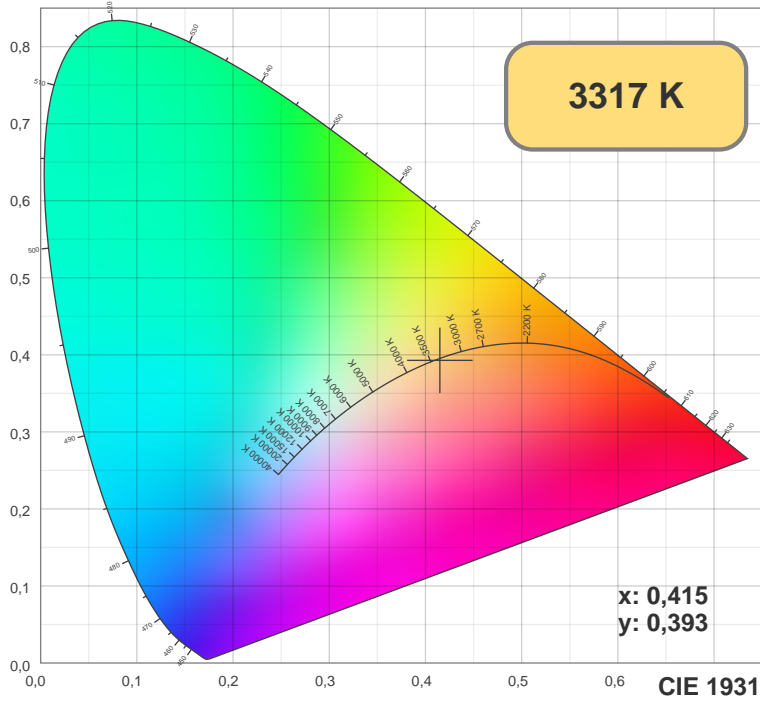
16.01.2019 15:37:29

Дополнительная информация:

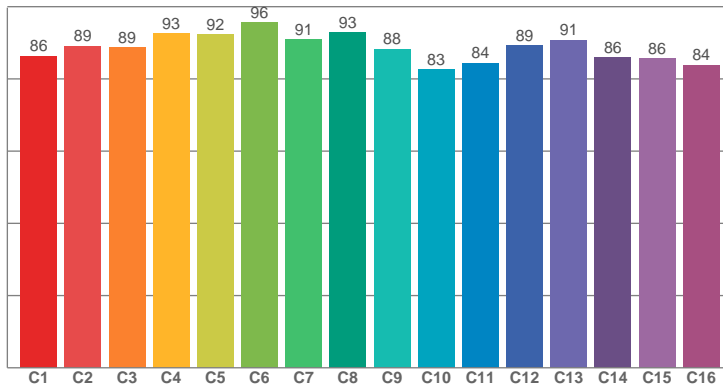
Режим - мощность 100%

Расфокусирован

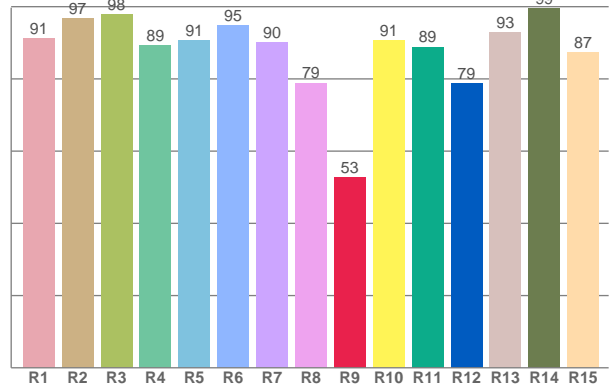
Шаг 0,5 градуса



TM30: 88,6



CRI: 91,2 (R1-R8)



CRI R values, only R1-R8 are used to calculate final CRI value

R1	R2	R3	R4	R5	R6	R7	R8	R9	R10	R11	R12	R13	R14	R15
91,18	96,69	97,89	89,19	90,63	94,76	90,05	78,87	52,67	90,75	88,83	78,74	92,90	99,43	87,29

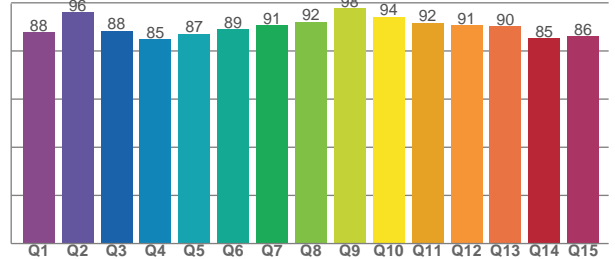
TM30 C values, 16 binned values out of total of 99 C values

C1	C2	C3	C4	C5	C6	C7	C8	C9	C10	C11	C12	C13	C14	C15	C16
86,39	89,17	88,70	92,57	92,23	95,59	90,88	92,79	88,34	82,72	84,43	89,26	90,82	85,86	85,58	83,86

CQS Q values

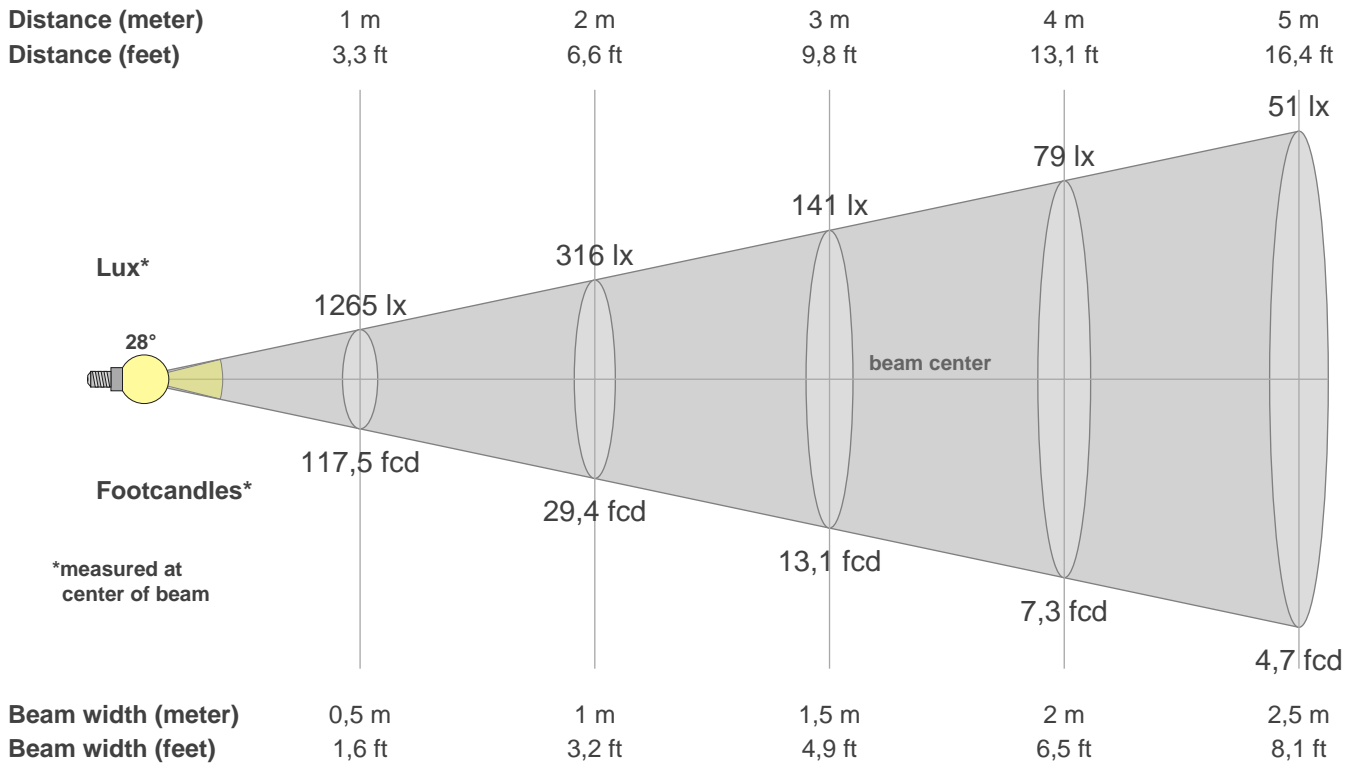
Q1	Q2	Q3	Q4	Q5	Q6	Q7	Q8	Q9	Q10	Q11	Q12	Q13	Q14	Q15
87,65	89,20	88,42	84,74	87,18	88,93	90,77	92,17	97,81	94,23	91,74	90,62	90,32	85,17	86,13

CQS: 89,4



Color parameters

CCT	CRI	CRI R9	TM30 Rf	TM30 Rg	CQS	x	y	u	v	Duv
3317 K	91,2	52,7	88,6	96,9	89,4	0,4	0,4	0,2	0,3	-0,0011



Intensities in 0° c-plane

0°	2°	4°	6°	8°	10°	12°	14°	16°	18°	20°	22°	24°	26°	28°	30°	32°	34°	36°	38°
1265	1214	1166	1269	1336	1165	954	820	707	624	563	541	519	70	27	17	12	10	9	9
100%	96%	92%	100%	106%	92%	75%	65%	56%	49%	45%	43%	41%	6%	2%	1%	1%	1%	1%	1%

Intensities in 90° c-plane

0°	2°	4°	6°	8°	10°	12°	14°	16°	18°	20°	22°	24°	26°	28°	30°	32°	34°	36°	38°
1265	1293	1278	1144	948	849	730	654	581	544	527	406	40	21	17	13	10	9	9	8
100%	102%	101%	90%	75%	67%	58%	52%	46%	43%	42%	32%	3%	2%	1%	1%	1%	1%	1%	1%

Intensities in 180° c-plane

0°	2°	4°	6°	8°	10°	12°	14°	16°	18°	20°	22°	24°	26°	28°	30°	32°	34°	36°	38°
1265	1165	968	856	768	692	596	528	502	484	219	43	29	20	19	15	14	10	12	11
100%	92%	77%	68%	61%	55%	47%	42%	40%	38%	17%	3%	2%	2%	1%	1%	1%	1%	1%	1%

Intensities in 270° c-plane

0°	2°	4°	6°	8°	10°	12°	14°	16°	18°	20°	22°	24°	26°	28°	30°	32°	34°	36°	38°
1265	1283	1301	1139	979	819	744	658	586	542	558	377	47	32	23	20	16	15	15	13
100%	101%	103%	90%	77%	65%	59%	52%	46%	43%	44%	30%	4%	3%	2%	2%	1%	1%	1%	1%

Beam angle 50%	Field angle 10%	Cutoff angle 2,5%	Intensity ratio in 120° cone	Intensity ratio in 90° cone
27,7°	46,1°	50,0°	96,2%	93,0%